



**MAKEMYTRIP
FOUNDATION**

***“Integrated Forestry and Water Management in the
Uttarakhand Himalayas”***

January 2024-December 2026

Geographical Location

Make Mytrip Foundation

Lamgara, District - Almora

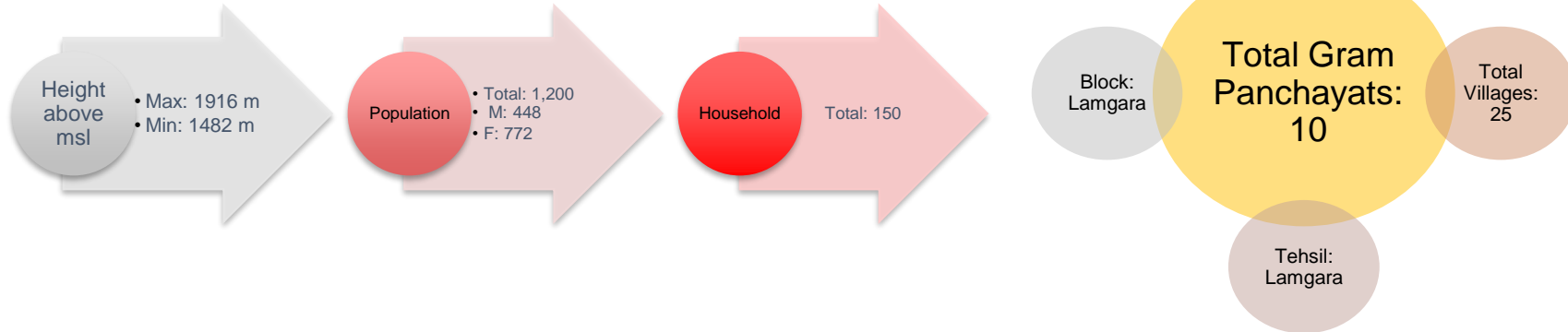
Legend

● Quadrant Plot



Core Objective of the program:

- **Sustainable Ecosystem Management:** To maintain and restore forest ecosystems, ensuring their resilience and adaptability to environmental changes
- **Water Resources Management:** To create awareness on Himalayan Ground water and enhance water resources for use of present generation without compromising on the needs of future generations
- **Climate Change Mitigation and Adaptation:** Contribute to the global efforts in building resilience to climate change through preservation & restoration of forests and water sources
- **Build a cadre of youth** sensitive towards the sustainable management of natural resources
- **Strengthen the village level institutions** for local governance of the ecosystems



Enhanced Vegetation Cover:

Afforestation Initiatives: Plantation of 7,50,000 saplings to improve vegetation cover.

Expected Vegetation Increase: An estimated 1125 hectares, equivalent to 2775 football fields.

Improved soil-moisture & access to Water:

Rejuvenation of Himalayan Springs: Treatment of 45 springs.

Projected Water Discharge: 4,73,04,000 liters annually, equivalent to 4,700 tankers per year.

Reduction in Drudgery: 30 hours/day saved per household during the lean season.

Community Engagement:

Strengthening Village Institutions: Formation of 45 institutions to manage Water & Forests.

Van Panchayat and Women Empowerment: Empower 675 women with technical and social skills,

Employment Generation: Rs27,00,000/- worth of employment generation through the initiative.

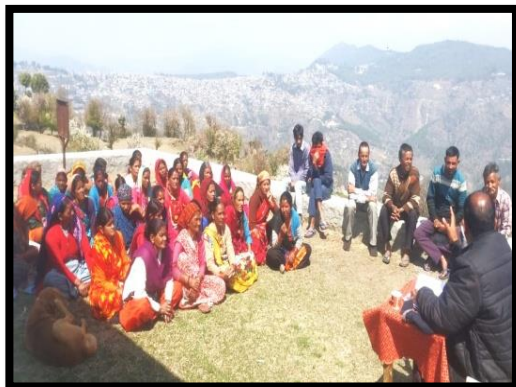
Training and Capacity Building: 15,000 hours of capacity building for various stakeholders.

Key Highlights:

- **Field surveys initiation:** Field trials successful and forms deployed for field data collection
- **Orientation Meetings:** 09 orientation meetings held with focus agenda: project overview, role of community, nursery establishment & raising, maintenance Protocols.
- **Technical Surveys for forest plantations:** 10 Sites Surveyed by plotting quadrant for: plantation density, canopy cover, avg. tree age, potential area for plantation
- **Nursery Establishment:** Community interactions identified suitable sites for nurseries. Nursery bags were distributed, and personnel received training.
- **Plantation Preparations:**
 - 187 Nurseries set up in 09 villages (500-2000 saplings capacity)
 - 1,76,200 poly bags distributed for nursery establishment.
 - Nursery vendors explored and on standby
 - Peak plantation season is expected in July 2024.
- **Field Training & Demonstrations:** Fully established nurseries at 8 villages, one site in progress. Training sessions covered site selection, polybag filling, seed inspection, and watering techniques.
- **10 Springs Identified:** Feasibility assessment completed for selection of springs



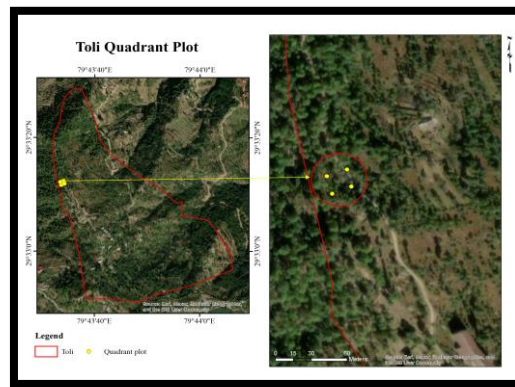
Activity Timeline										
S.No	Activity	Villages								
		Golimohar	Kaltani	Sirsoda	Dhubrouli	Dol	Dhura Sangroli	Ralakot	Toli	Palna
1	Community Orientation & Meeting	Yes	Yes	Yes	Yes	Yes	Yes	Yes	Yes	Yes
2	Feasibility Study & Site Selection	Yes	Yes	Yes	Yes	Yes	Yes	Yes	Yes	Yes
3	Identifying Nursery In- Charge	Yes	Yes	Yes	Yes	Yes	Yes	Yes	Yes	Yes
4	Training of Nursery In-Charge	Yes	Yes	Yes	Yes	Yes	Yes	Yes	Yes	Yes
5	Nursery Establishment	Yes	Yes	Yes	Yes	Yes	Yes	On Going	Yes	Yes
6	Nursery Maintenance	Yes	Yes	Yes	Yes	Yes	Yes	On Going	Yes	Yes
7	Site Preparation & Pit digging	Scheduled	Scheduled	Scheduled	Scheduled	Scheduled	Scheduled	Scheduled	Scheduled	Scheduled
8	Soil & Water Conservation Interventions	Scheduled	Scheduled	Scheduled	Scheduled	Scheduled	Scheduled	Scheduled	Scheduled	Scheduled
9	Transplantation	Scheduled	Scheduled	Scheduled	Scheduled	Scheduled	Scheduled	Scheduled	Scheduled	Scheduled



Orientation Meeting at Village level



Marking of Quadrant



Plotting of Field information on Software



Distribution of Poly Bags



Poly Bag Filling for Nursery Formation





Nursery Person Training



Seed Packaging for distribution



Seed Distribution



Seed Sowing



Nursery Raising



Nursery Visit

Thank You